



2019

ANNUAL REPORT

ALASKA COMMUNITY HEALTH CENTERS*

Promoting Healthy Communities



ALASKA COMMUNITY HEALTH CENTERS*

ALASKA'S HEALTH CENTERS ARE COMMITTED TO HELPING ALASKANS ENJOY HEALTHY LIVES IN THEIR COMMUNITIES.

Alaska's Federally Qualified Health Centers (Community Health Centers or CHCs) care for 1/7 Alaskans at over 160 sites by providing integrated medical, dental, behavioral health, and substance abuse treatment services.

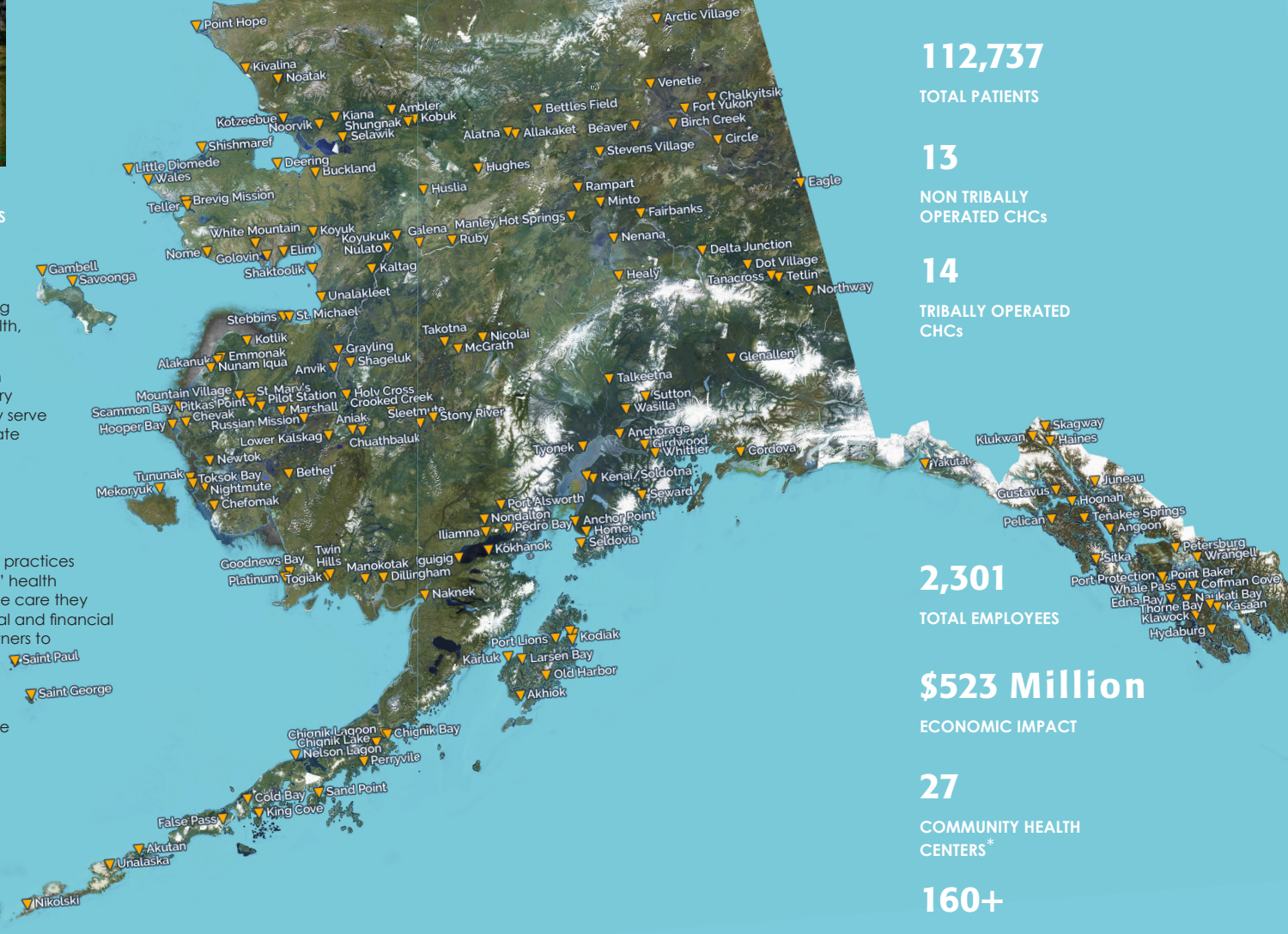
CHCs are governed by their patients, driven by community need, and responsive to every patient's individual health care needs. They serve as the safety net health provider that our state relies on to serve anyone regardless of their ability to pay. CHCs are also a key component of the health system that improves quality and patient outcomes and lowers healthcare costs.

In 2019, CHCs focused on issues vital to their practices including recruiting and "growing their own" health professionals, and increasingly managing the care they provide through close analysis of their clinical and financial data. They also joined with community partners to support a robust and sustainable Medicaid program.

We invite you to stop by your Community Health Center to learn more and/or become a patient.

NANCY MERRIMAN
Executive Director, APCA

KEVIN MUNSON
Board Chair, APCA
Executive Director, Mat-Su Health Services



539,348

TOTAL PATIENT VISITS

112,737

TOTAL PATIENTS

13

NON TRIBALLY
OPERATED CHCs

14

TRIBALLY OPERATED
CHCs

2,301

TOTAL EMPLOYEES

\$523 Million

ECONOMIC IMPACT

27

COMMUNITY HEALTH
CENTERS*

160+

CARE DELIVERY SITES

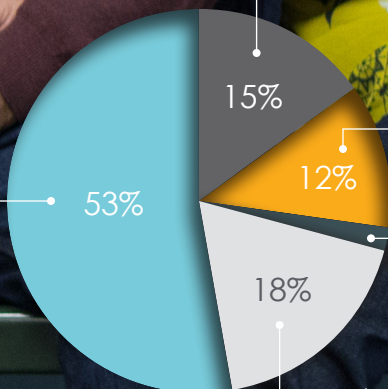
*Community Health Center Program grantees

SERVING VULNERABLE ALASKANS

PATIENT VISITS BY PRIMARY SERVICE TYPE

Community Health Aide
& Other Services

Medical



Behavioral Health and
Substance Abuse

Vision 2%

Dental

PATIENTS BY ETHNICITY/RACE



1% Pacific Islander/Native Hawaiian

2% African American/Black

3% More than one race

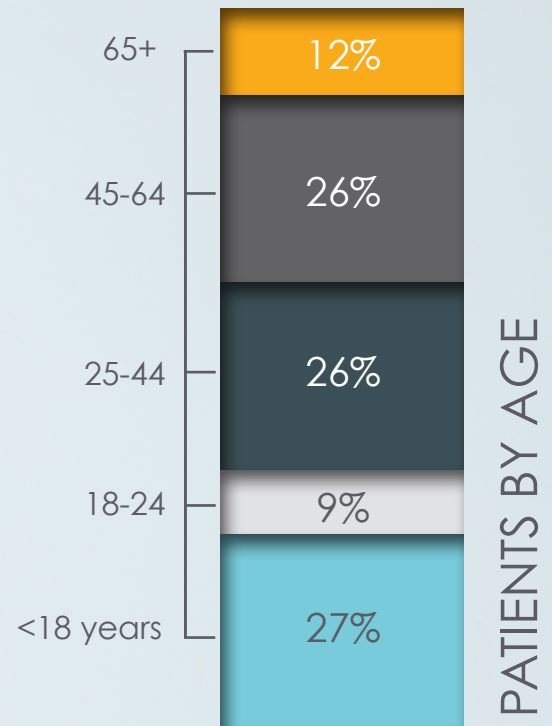
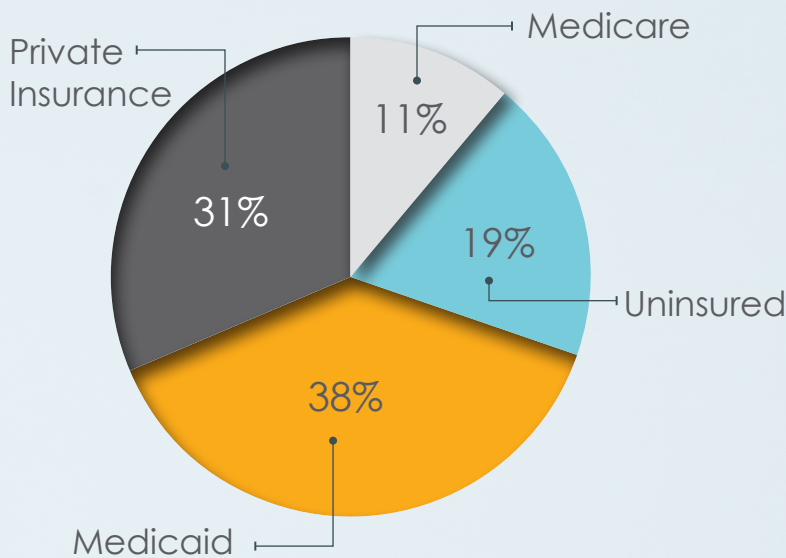
4% Asian

44% Caucasian/White

45% American Indian/Alaska Native

PATIENT COVERAGE SOURCE

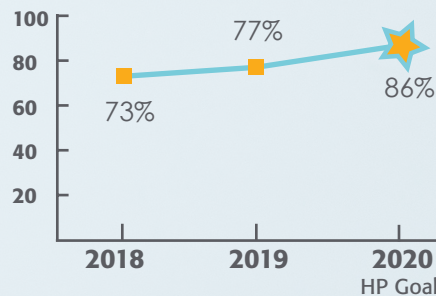
Patient Health Care



KEY HEALTH MEASURES

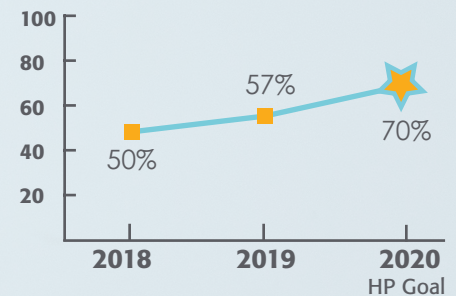
CHCs are required to closely monitor quality of care by tracking key health measures. These graphs represent a snapshot of some of our key measures.*

* Goals based on Healthy People 2020
 ** CHC measures based on 2018 UDS



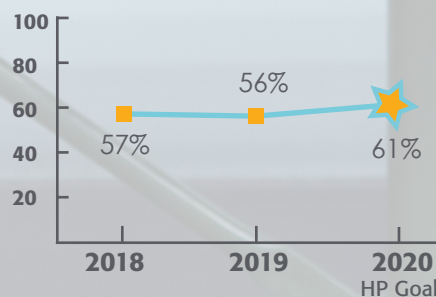
TOBACCO USE ASSESSMENT

Percentage of patients who received tobacco use screening and cessation counseling when appropriate.



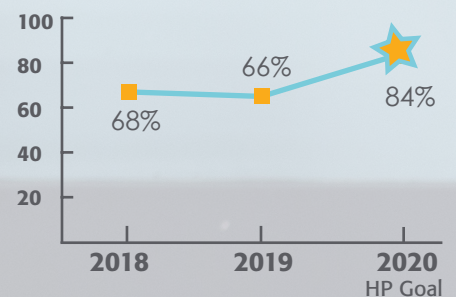
DEPRESSION SCREENING

Percentage of patients who received depression screening and follow up, if appropriate.



HYPERTENSION

Percentage of patients with controlled blood pressure.



DIABETES

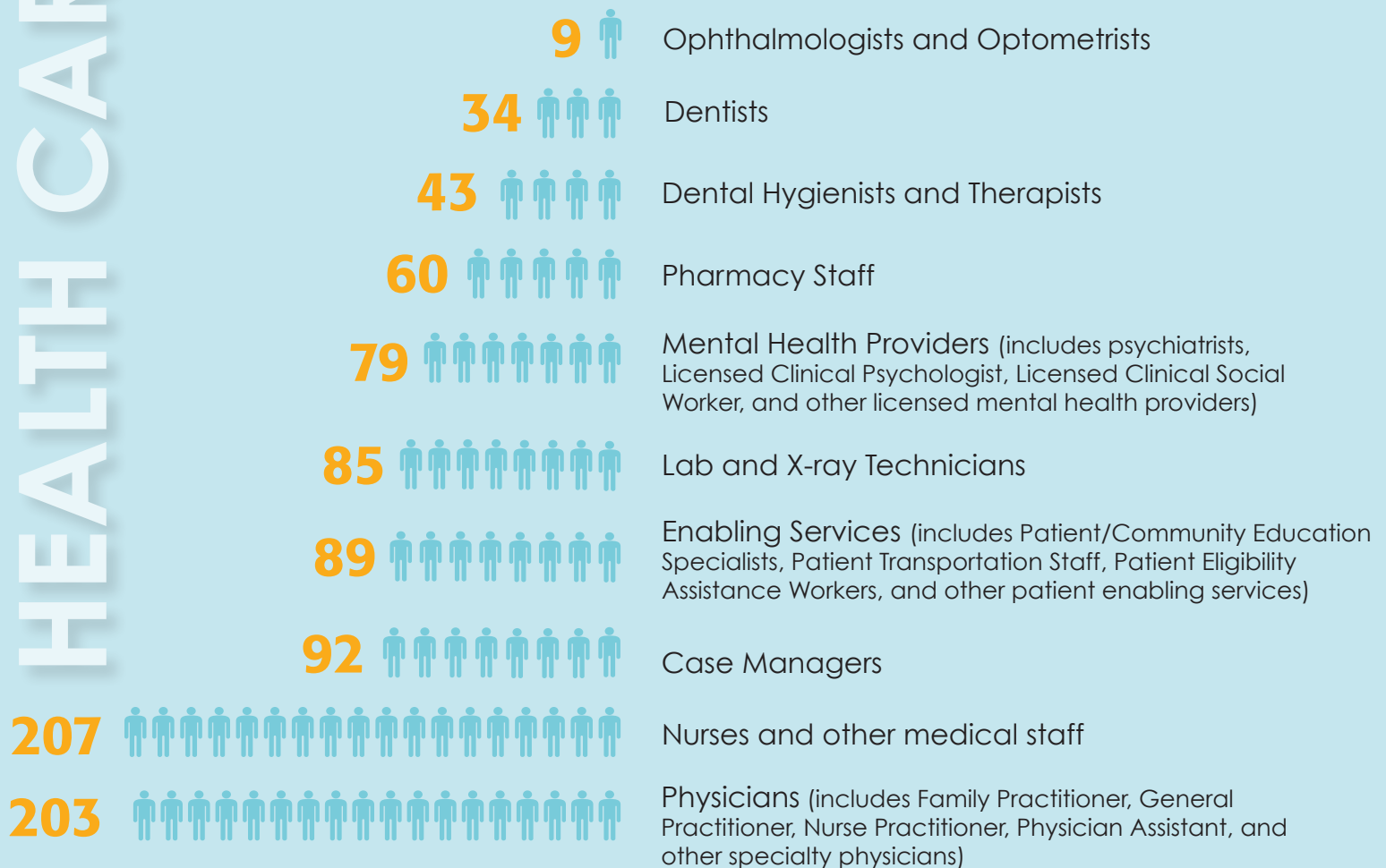
Patients with controlled diabetes.

100% of health centers met or exceeded at least one HEALTHY PEOPLE 2020 GOAL FOR CLINICAL PERFORMANCE.

HEALTH CARE WORKFORCE

CHCS GREATEST ASSET AND BIGGEST CHALLENGE

In addition to offering clinical services, CHCs provide direct economic impact by employing people in their communities. Mission driven care teams at CHCs include medical, dental and behavioral health providers, as well as clinical and administrative professionals from many disciplines. Recruiting and retaining workforce are the biggest challenges that Alaska CHCs face.



CREATING HEALTHY ALASKAN COMMUNITIES

ECONOMIC STIMULUS



3,597
TOTAL JOBS

2,301

Health Center Jobs

1,410

Other Jobs in the community



\$523 Million
TOTAL ECONOMIC IMPACT

\$304 Million

Direct Health Care Spending

\$219 Million

Community Spending

STATE-OF-THE-ART PRACTICES



100%

of health centers have installed and currently use an **ELECTRONIC HEALTH RECORD (EHR)**

63%

of health centers are currently participating in the Centers for Medicare and Medicaid Services **"MEANINGFUL USE" EHR INCENTIVE PROGRAM**



74%

of health centers are recognized as **PATIENT-CENTERED MEDICAL HOMES**



COMMUNITY HEALTH CENTER PROGRAM GRANTEES



Aleutian Pribilof Island Association
Anchorage Neighborhood Health Center
Bethel Family Clinic
Bristol Bay Area Health Corporation
Bristol Bay Borough (Camai CHC)
Municipality of Skagway (Dahl Memorial Clinic)
Council of Athabascan Tribal Governments
Cross Road Health Ministries, Inc.
Eastern Aleutian Tribes, Inc.
Girdwood Health Clinic, Inc.
Iliuliuk Family and Health Services
Interior Community Health Center
Kodiak Area Native Association
Kodiak Community Health Center
Maniilaq Association
Mat-Su Health Services
Native Village of Eyak (Ilanka CHC)
Norton Sound Health Corporation
Peninsula Community Health Services of Alaska
Seldovia Village Tribe (SVT Health & Wellness)
Seward Community Health Center
Southeast Alaska Regional Health Consortium
Southcentral Foundation
Sunshine Community Health Center
Tanana Chiefs Conference
Yakutat Tlingit Tribe (Yakutat CHC)
Yukon Kuskokwim Health Corporation



Alaska Primary Care
ASSOCIATION

1231 Gambell St Ste 200

Anchorage, AK 99501

(907) 929-2722 www.alaskapca.org



This project is supported by the Health Resources and Services Administration (HRSA) of the U.S. Department of Health and Human Services (HHS) under grant number U58CS06838 "State and Regional Primary Care Associations" for \$1,471,494. This information or content and conclusions are those of the author and should not be construed as the official position or policy of, nor should any endorsements be inferred by HRSA, HHS or the U.S. Government.

Resources: 2018 HRSA Uniform Data System