



Alaska Primary Care  
ASSOCIATION

ALASKA COMMUNITY HEALTH CENTERS

# 2020 ANNUAL REPORT

DEDICATED TO ALASKA'S

*safety net*

HEALTH CARE PROVIDERS



# ALASKA'S COMMUNITY HEALTH SYSTEMS

RESPONSIVE & RESILIENT SAFETY NET

## RESPONSIVE & RESILIENT TO COMMUNITY NEEDS

In a year like no other, Alaska's Community Health Centers are adapting to their communities' needs in the face of the COVID-19 pandemic, while remaining true to the mission of increasing access to primary care for everyone, regardless of ability to pay. COVID-19 has changed the way Community Health Centers do their work, and they are playing a key role in testing, and contact tracing, and quickly developing their capacity to deliver integrated primary care via telehealth visits.

Alaska's Federally Qualified Health Centers (Community Health Centers or CHCs) care for 1 in 7 Alaskans at over 160 sites by providing integrated medical, dental, behavioral health, and substance abuse treatment services. CHCs are governed by their patients, driven by community need to address health equity and access to care, and are responsive to every health care need. CHC teams are innovative, adaptive and committed to their neighborhoods. They are making their communities healthier.

Get to know Alaska's community health system by visiting your local CHC or visit [alaskapca.org](https://alaskapca.org).

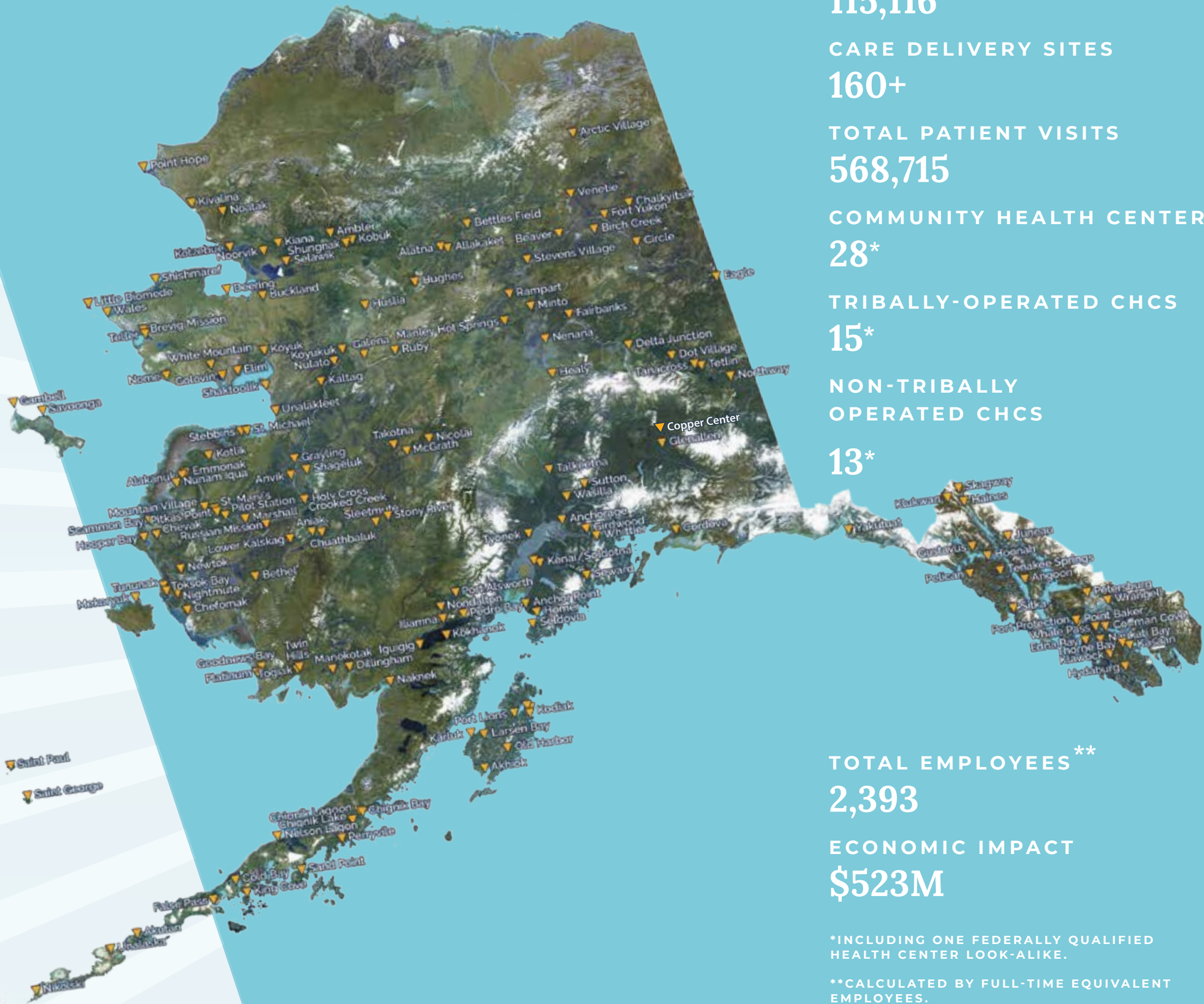
### Nancy Merriman

Executive Director, APCA

### Melody West

Board Chair, APCA

Executive Director, Sunshine Community Health Center





# ALASKA CHCS' FRONT LINE RESPONSE TO COVID-19 HAS BEEN REMARKABLE

COMMUNITY HEALTH CENTERS HAVE ALWAYS BEEN ON THE FRONT LINES DELIVERING SAFETY NET CARE TO ALASKANS REGARDLESS OF THEIR ABILITY TO PAY.

Community health centers quickly mobilized to support their patients. They coordinated with their local Emergency Operation Centers, acquired new testing equipment, personal protective equipment (PPE) and other critical supplies. At the majority of CHCs, patients accessed new care delivery models, telehealth delivery opportunities and programs, much needed behavioral health support, and more.

COMMUNITY TRUST IN ALASKA'S COMMUNITY HEALTH CENTERS IS STRONG.

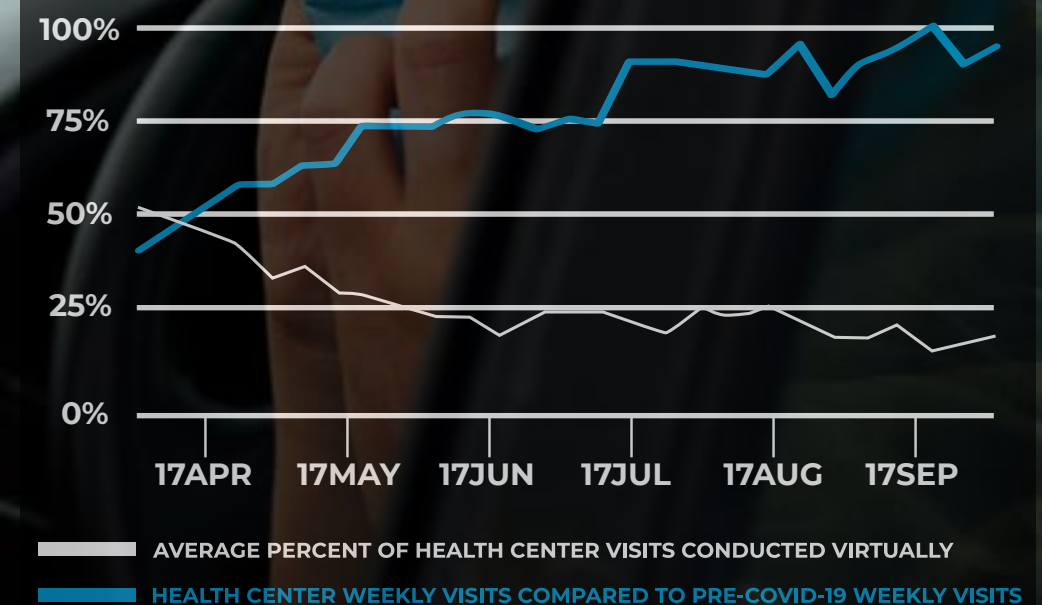
In times of need, CHC staff provide **whole patient care** and address **social determinants of health**. Patients have struggled with the loss of jobs and insurance, housing concerns and hunger – and Community Health Centers are by their side providing health literacy support, enrollment assistance, resources and referrals, and a helping hand.

YEAR OF THE

safety net

HEALTH CARE PROVIDER

## ALASKA CHCs DURING COVID-19 IN 2020

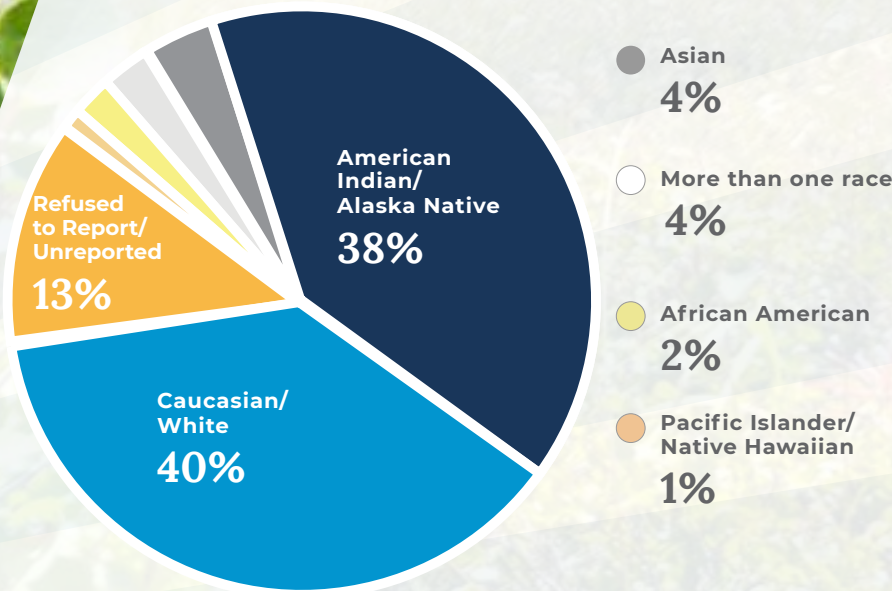




# ALASKA CHCS

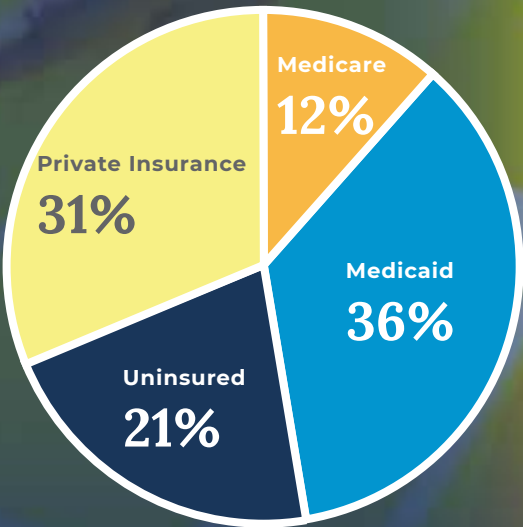
BY THE NUMBERS

## PATIENTS BY ETHNICITY/RACE



\*PERCENT OF HISPANIC/LATINO OF TOTAL KNOWN ETHNICITY IS 4.93%.

## PATIENT COVERAGE SOURCE



## PATIENTS BY AGE

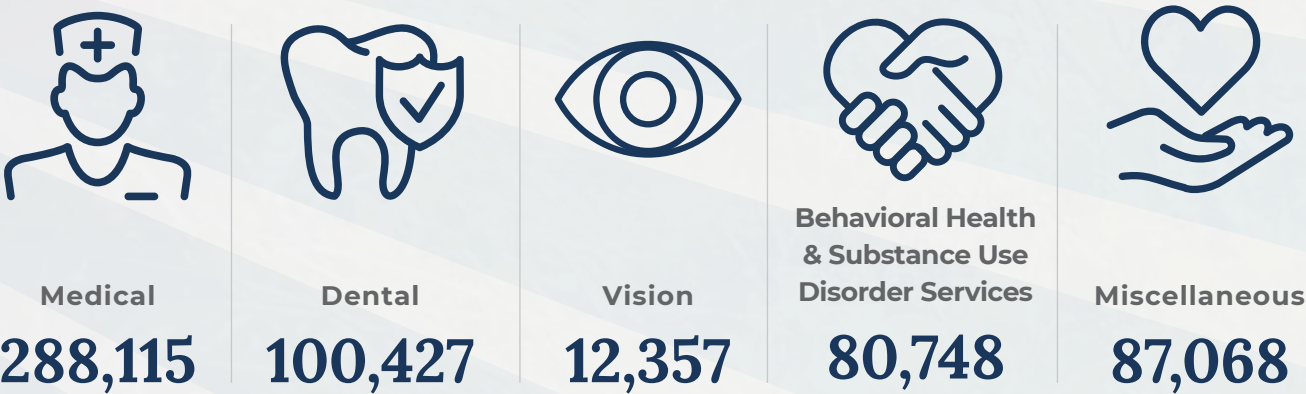


## KEY HEALTH MEASURES

Federally Qualified Health Centers (FQHCs) are required to closely monitor quality of care by tracking key health measures. These statistics are just a snapshot of our overall key measures.



## PATIENT VISIT BY TYPE





Alaska CHCs and APCA focus both on recruiting and retaining provider and training staff from their communities.

Staff are under tremendous pressure in their response to COVID-19 but show great resilience every day in their support of their patients and one another.

HEALTH CARE  
WORKFORCE

Ophthalmologists &  
Optometrists

19

Pharmacy  
Staff

59

Enabling  
Services\*\*\*

82

Dentists

37

Nurses and  
Other Medical  
Staff

227

Dental Hygienists  
& Therapists

44

Mental Health  
Providers\*\*

86

Lab X-Ray  
Technicians

86

Physicians\*

212

Case  
Manager

88

\*Includes Family Practitioners, Nurse Practitioners, Physician Assistants, and other specialty physicians

\*\*Includes Psychiatrists, Licensed Clinical Psychologists, Licensed Clinical Social Workers, and other Licensed Mental Health Providers

\*\*\*Includes Patient/Community Education Specialists, Patient Transportation Staff, Patient Eligibility Assistance Workers, and other patient enabling services.

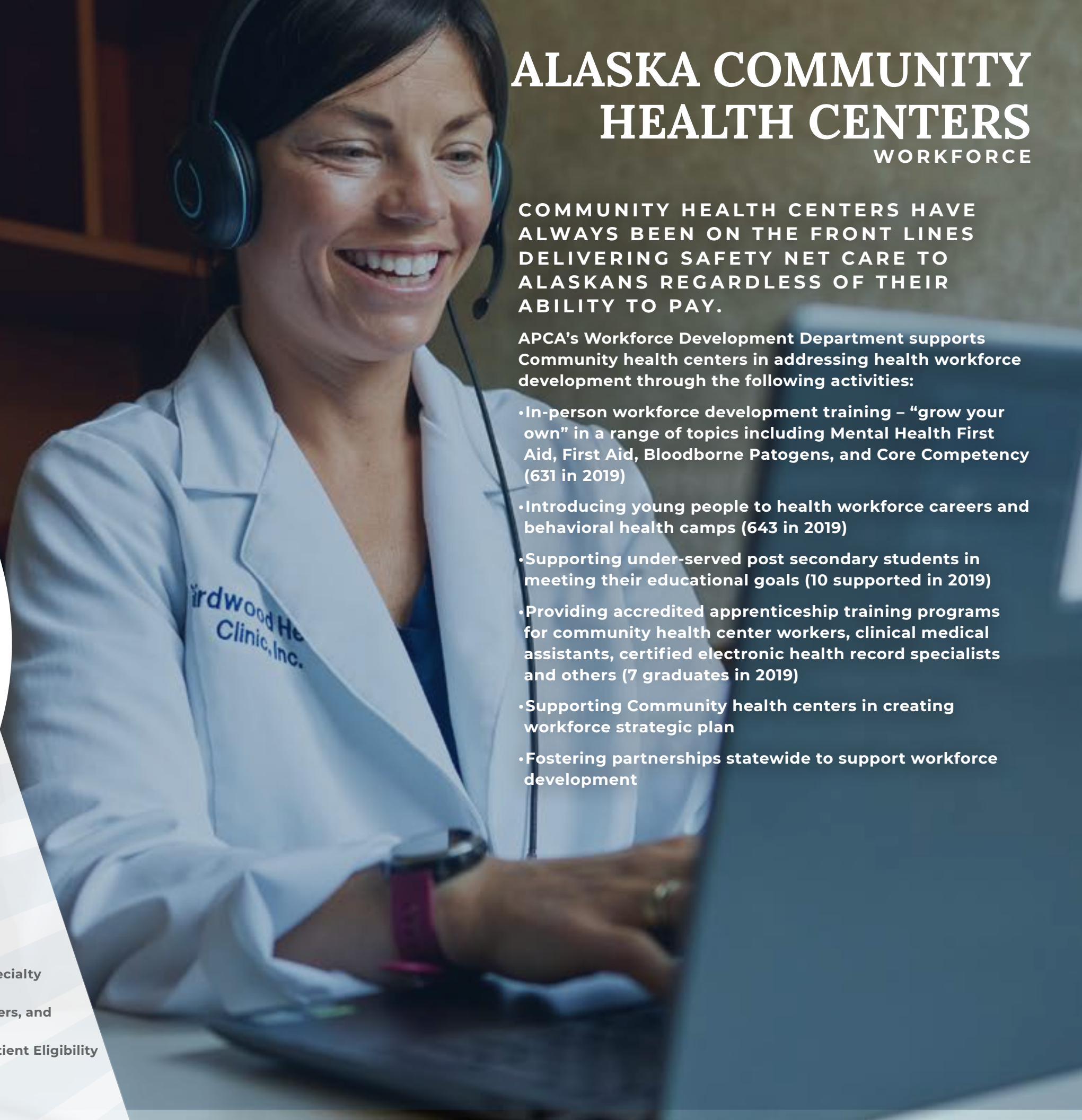
# ALASKA COMMUNITY HEALTH CENTERS

WORKFORCE

COMMUNITY HEALTH CENTERS HAVE ALWAYS BEEN ON THE FRONT LINES DELIVERING SAFETY NET CARE TO ALASKANS REGARDLESS OF THEIR ABILITY TO PAY.

APCA’s Workforce Development Department supports Community health centers in addressing health workforce development through the following activities:

- In-person workforce development training – “grow your own” in a range of topics including Mental Health First Aid, First Aid, Bloodborne Patogens, and Core Competency (631 in 2019)
- Introducing young people to health workforce careers and behavioral health camps (643 in 2019)
- Supporting under-served post secondary students in meeting their educational goals (10 supported in 2019)
- Providing accredited apprenticeship training programs for community health center workers, clinical medical assistants, certified electronic health record specialists and others (7 graduates in 2019)
- Supporting Community health centers in creating workforce strategic plan
- Fostering partnerships statewide to support workforce development



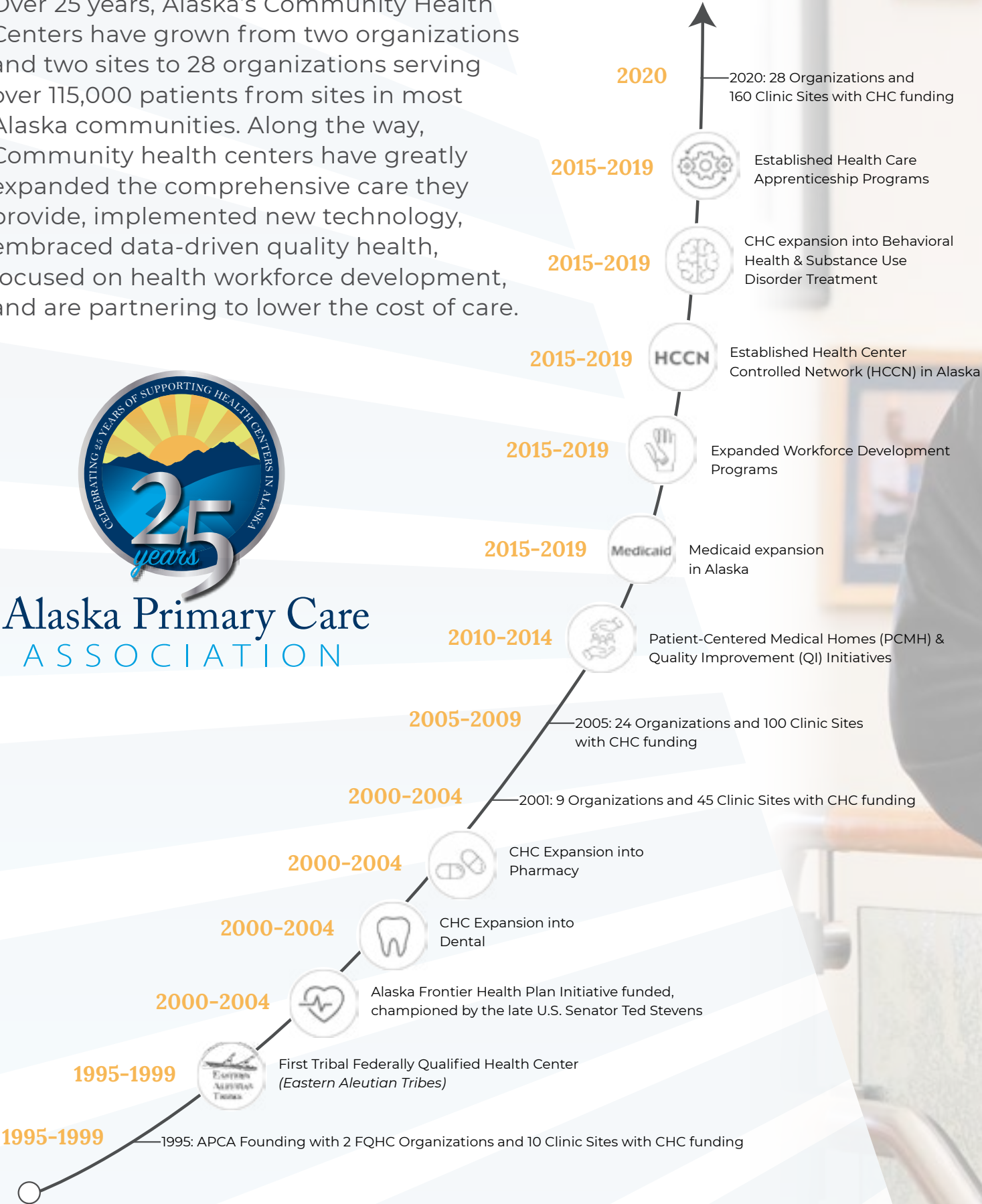


# 25TH ANNIVERSARY

Over 25 years, Alaska's Community Health Centers have grown from two organizations and two sites to 28 organizations serving over 115,000 patients from sites in most Alaska communities. Along the way, Community health centers have greatly expanded the comprehensive care they provide, implemented new technology, embraced data-driven quality health, focused on health workforce development, and are partnering to lower the cost of care.



Alaska Primary Care  
ASSOCIATION



## COMMUNITY IMPACT

CONTRIBUTING TO THE COMMUNITIES  
THAT WE SERVE



**24%**  
LOWER COST  
FOR HEALTH  
CARE  
PATIENTS



**\$92M**  
SAVINGS TO  
MEDICAID



**\$184M**  
SAVINGS  
TO THE  
HEALTH CARE  
SYSTEM

# COMMUNITY HEALTH CENTERS

## PROGRAM GRANTEEES

[Aleutian Pribilof Island Association](#)

[Anchorage Neighborhood Health Center](#)

[Bethel Family Clinic](#)

[Bristol Bay Area Health Corporation](#)

[Bristol Bay Borough \(Camai CHC\)](#)

[Copper River Native Association\\*](#)

[Council of Athabascan Tribal Governments](#)

[Cross Road Health Ministries, Inc.](#)

[Eastern Aleutian Tribes, Inc.](#)

[Girdwood Health Clinic, Inc.](#)

[Iliuliuk Family and Health Services](#)

[Interior Community Health Center](#)

[JAMHI Health & Wellness Inc.\\*](#)

[Kodiak Area Native Association](#)

[Kodiak Community Health Center](#)

[Maniilaq Association](#)

[Mat-Su Health Services](#)

[Municipality of Skagway \(Dahl Memorial Clinic\)](#)

[Native Village of Eyak \(Ilanka CHC\)](#)

[Norton Sound Health Corporation](#)

[Peninsula Community Health Services of Alaska](#)

[Seldovia Village Tribe \(SVT Health & Wellness\)](#)

[Seward Community Health Center](#)

[Southcentral Foundation](#)

[Southeast Alaska Regional Health Consortium](#)

[Sunshine Community Health Center](#)

[Tanana Chiefs Conference](#)

[Yakutat Tlingit Tribe \(Yakutat CHC\)](#)

[Yukon Kuskokwim Health Corporation](#)



## Alaska Primary Care ASSOCIATION

This project is supported by the Health Resources and Services Administration (HRSA) of the U.S. Department of Health and Human Services (HHS) under grant number U58CS06838 "State and Regional Primary Care Associations" for \$1,471,494. This information or content and conclusions are those of the author and should not be construed as the official position or policy of, nor should any endorsements be inferred by HRSA, HHS or the U.S. Government. Resources: 2019-20 HRSA Uniform Data System, HRSA Health Center COVID-19 Survey.

Alaska Primary Care Association  
3111 C Street, Ste 500  
Anchorage, AK 99503  
(907) 929-2722 | [alaskapca.org](http://alaskapca.org)

