

ALASKA COMMUNITY HEALTH CENTERS

ANNUAL REPORT 2023



Alaska Primary Care
ASSOCIATION

ALASKAPCA.ORG

SERVING ONE IN FIVE ALASKANS

ALASKA'S COMMUNITY HEALTH CENTERS

Together, we are Advancing Alaska's Wellness.

In 2022, Alaska Primary Care Association adopted this new mission: Advancing Alaska's Wellness. This is in recognition of the broader role that APCA and Alaska's Community Health Centers play in the lives of their patients, economic health of communities, and in shaping the health workforce throughout the state.

Alaska's Health Centers provide whole person care to a growing number of Alaskans – now 1 in 5.

In 2023, APCA and Health Centers are focused on three important goals – expanding access to care, deepening the impact of our comprehensive care system, and training Alaskans in the communities where they live.

To achieve these goals, we will continually seek new partnerships, advocate for additional resources, expand access to care, and continue to build a workforce development program that improves the lives of individuals and communities.

We invite you to learn more about a Health Center near you.

Nancy Merriman – CEO
Alaska Primary Care Association

Mary Swain
Board Chair – APCA
Executive Director – Camai Community Health Center

AT A GLANCE*

TOTAL PATIENTS
116,957

CARE DELIVERY SITES
187

COMMUNITY HEALTH CENTERS
29*

TRIBALLY-OPERATED CHCS
15*

NON-TRIBALLY OPERATED CHCS
14*

TOTAL EMPLOYEES**
2,645

ECONOMIC IMPACT
\$1.7 Billion

*Information collected by UDS; released for calendar year 2021

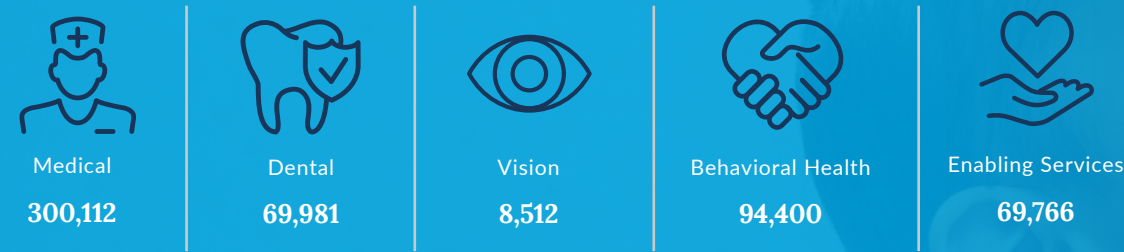
**Including two Federally Qualified Health Center Look-Alikes. Look-Alikes do not receive HRSA based funding.

***Calculated by full-time equivalent employees.

ADVANCING ACCESS

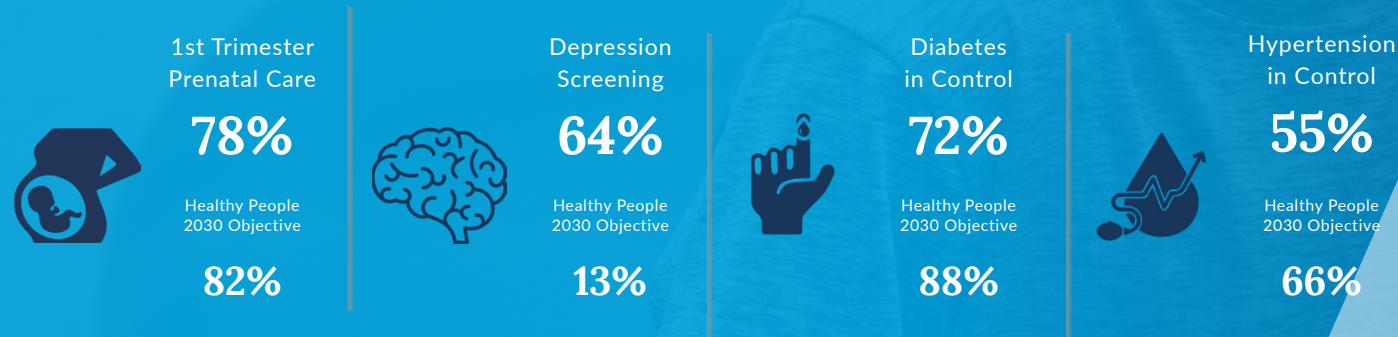
ALASKA COMMUNITY HEALTH CENTER STATISTICS & QUALITY MEASURES

PATIENT VISIT BY TYPE



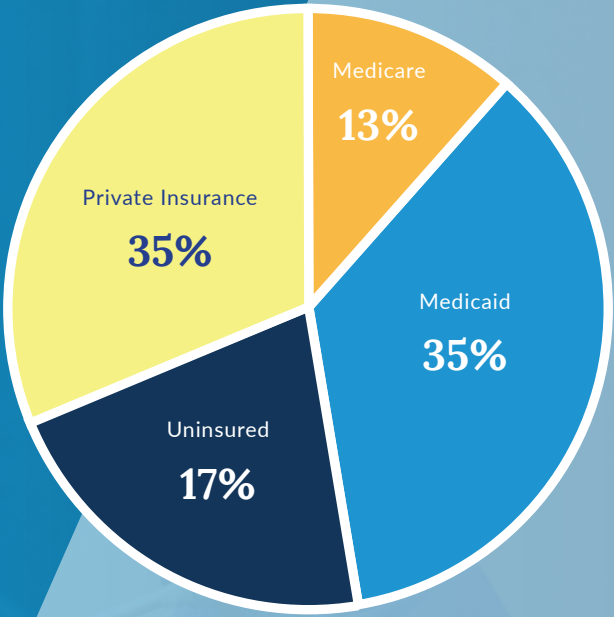
KEY HEALTH MEASURES

CHCs are required to closely monitor quality of care by tracking 19 key health measures.

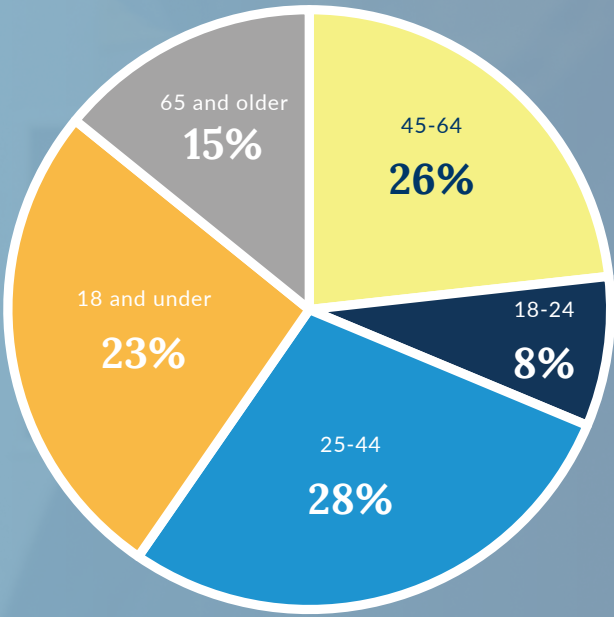


For more information about how these health measures benefit Alaskans, visit the [Healthy Alaskans 2030 initiatives](#).

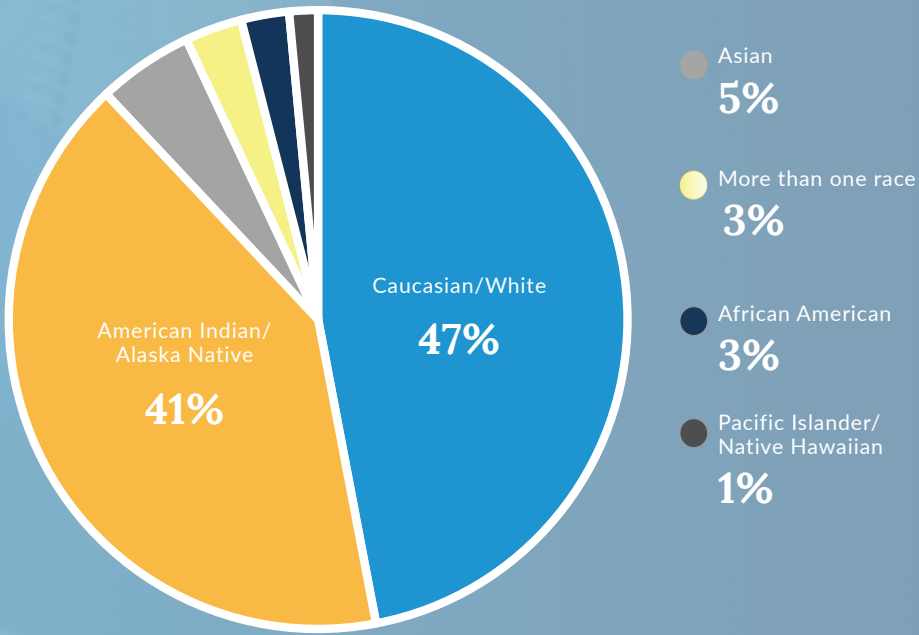
PATIENT COVERAGE SOURCE



PATIENT BY AGE



PATIENT BY ETHNICITY / RACE



BUILDING ALASKA’S HEALTH WORKFORCE

WORKFORCE

APCA and Alaska Health Centers lead efforts to identify new health care workers, create pathways for advancement, support advanced health degree programs, and innovate to recruit and retain the clinical providers. Health centers are local economic drivers in their communities that provide stable employment and with indirect economic impacts that ripple out to employ thousands of additional Alaskans. APCA and Alaska Health Centers are focused on four different activities to build its workforce.

PATH (PRE-APPRENTICESHIP TRAINING IN HEALTH CARE)

The Pre-Apprenticeship Training in Health Care (PATH) Academy is a free, two-week training program for Alaskans 16+ that provides the necessary certifications and skills to enter a healthcare job or apprenticeship successfully. APCA is an industry-recognized leader in providing this quality pre-apprenticeship training. This program is poised to expand dramatically in 2023 and beyond with new resources and broad partnerships throughout the state.

COMMUNITY HEALTH WORKERS

Community Health Workers (CHWs) provide an invaluable community-based link between patients and the health center. They support vital activities including chronic disease management support, expanding access to behavioral health care, and serving as patient advocates. CHWs connect patients to community-based services (such as food and housing assistance) that positively impact care outcomes and quality of life.

CERTIFIED APPRENTICESHIPS

APCA and Health Centers have been active leaders in providing Registered Apprenticeship programs and upskilling their staff members for many years. APCA currently offers 8 different Department of Labor Registered programs in clinical support programs (such as Pharmacy Technician, Medical Assistant, Dental Assistant, and Coding & Billing) designed to provide opportunities for Alaskans to “earn while they learn” at no cost. Over 160 Alaskans in communities across the state are enrolled in an Apprenticeship program at any given time.

CLINICAL PROVIDERS

Alaska Health Centers employ approximately 1,200 clinicians and clinical support staff in areas including medical, dental, behavioral health, radiology, pharmacy, and care coordination services. Through partnerships with university, state, and federal partners, CHCs focus on workforce planning and readiness, recruiting, in-house training, and retention programs.

ALASKA HEALTH CENTERS COMMUNITY IMPACT

SAVINGS TO THE SYSTEM



- 24%** lower costs for Health Center Medicaid Patients
- \$99** million savings to Medicaid
- \$194** million savings to the overall health system

2021 CARE FOR VULNERABLE POPULATIONS



3%
4-year patient growth

116,957
Patients Served

556,749
Clinic Visits

63,302
Virtual Visits

620,051
Total Patient Visits

26,146 of patients are children & adolescents

80% of patients are low income

57% of patients identify as an ethnic or racial minority

0.3% of patients are agricultural workers

4% of patients are veterans

3% of patients are homeless

STATE-OF-THE-ART-PRACTICES

- 100%** of health centers have installed and currently use an Electronic Health Record (EHR)
- 86%** of health centers participate in the Centers for Medicare & Medicaid Services (CMS) interoperability programs that promote the quality exchange of data between providers
- 100%** of health centers are using Telehealth to provide remote clinical care services

ALASKA'S COMMUNITY HEALTH CENTERS

Aleutian Pribilof Island Associations
Anchorage Neighborhood Health Center
Bethel Family Clinic
Bristol Bay Area Health Corporation
Camai Community Health Center
Copper River Native Association
Council of Athabascan Tribal Government
Cross Road Health Ministries, Inc.
Eastern Aleutian Tribes, Inc.
Girdwood Health Clinic
Iliuliuk Family and Health Services, Inc.
Interior Community Health Center
JAMHI Health and Wellness
Kodiak Area Native Association
Kodiak Island Health Care Foundation
Maniilaq Association
Mat-Su Health Services, Inc.
Dahl Memorial Clinic
Ilanka Community Health Center
Norton Sound Health Corporation
Peninsula Community Health Services of Alaska, Inc.
Seldovia Village Tribe
Seward Community Health Center
Southcentral Foundation
Southeast Alaska Regional Health Consortium
Sunshine Community Health Center, Inc.
Tanana Chiefs Conference
Yakutat Tlingit Tribe
Yukon Kuskokwim Health Corporation



Alaska Primary Care Association (APCA) supports the development and operation of Alaska's 29 Community Health Centers (CHC) and Look A-likes (LAL). It is, in-part, supported by the Health Resources and Services Administration (HRSA) of the U.S. Department of Health and Human Services.

Community Health Centers are America's largest primary care health system providing comprehensive primary care services that include medical, dental, behavioral health, pharmacy, care coordination, and enabling services.

CHCs are unique in that they provide care to anyone, regardless of their ability to pay and are governed by patient-majority boards.

Alaska Primary Care Association
3111 C Street, Ste 500
Anchorage, AK 99503
(907) 929-2722 | alaskapca.org



ANNUAL REPORT DESIGNED BY:
SNOWY OWL ADVERTISING, LLC