



ALASKA COMMUNITY HEALTH CENTERS

Advancing Alaska's Wellness

2025

Photo Courtesy of Sunshine Community Health Center / DeReamers

Improving Lives & Saving Money

Alaska's Federally Qualified Health Centers (FQHCs), (also known as Community Health Centers or CHCs), provide tremendous value and impact for our state. These community-based clinics help patients achieve wellness and productive lives. At the same time, Community Health Centers generate savings for the healthcare system, all while growing employment and stability in their communities.

Community Health Centers care for 1 in 6 Alaskans in over 200 clinic sites with high quality, comprehensive primary care. Serving everyone regardless of their insurance coverage, CHCs are an important part of the community safety net. For example, as the senior population grows in Alaska, CHCs are finding innovative ways to care for aging Alaskans in their home communities. And because access is key to health care, most Health Centers are in rural and frontier Alaska communities where they are leading in integrated behavioral healthcare, expanding mobile and community-based services, and growing Alaska's future healthcare workforce.

In 2025, we are focused on three priorities:

- Payment – ensuring that Community Health Centers are accurately and rightfully paid for the care that they give to patients
- Workforce – developing, recruiting, and retaining the clinical providers and other staff needed to provide the high-quality care Alaskans deserve
- Access – assuring that anyone needing care can get it in their community

For 30 years, the Alaska Primary Care Association, (APCA) and Alaska's 29 Community Health Centers have devoted themselves to ensuring all Alaskans can get good care where they live. We are committed to sustainable, high-quality, and comprehensive primary care.

Learn more about a Community Health Center near you.



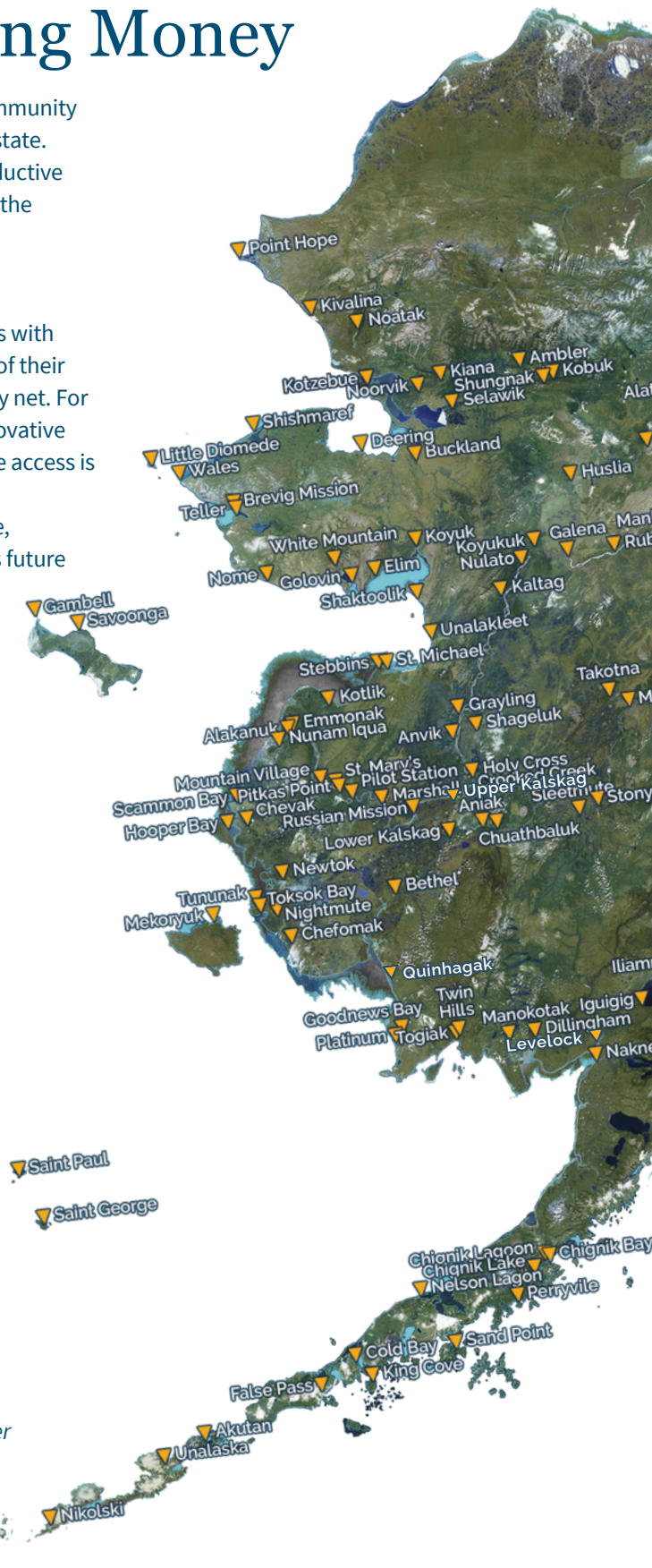
haas & Merino

Nancy Merriman
Chief Executive Officer of Alaska Primary Care Association



JER

Joshua Gilmore – APCA Board Chair
Chief Executive Officer of Sunshine Community Health Center



At a Glance

Total Patients*
112,659

Total Employees**
2,691

Community Health Centers*
29

Tribally Operated CHCs*
15

Non-Tribally Operated CHCs*
14

Care Delivery Sites*

Permanent Sites

 **197**

School-Based Sites

 **8**

Mobile Clinics

 **8**

Other Clinic Types

 **5**

*All data shared in this report is collected by the HRSA Uniform Data System (UDS) for Alaska Health Centers for calendar year 2023.

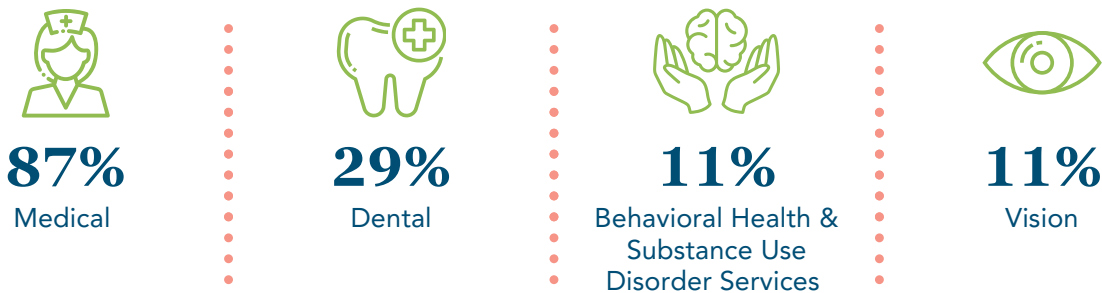
Includes two FQHC Look-Alikes that do not receive HRSA-based grants.

**Calculated by full-time equivalent employees.

For more information on individual CHCs, visit our interactive map at alaskapca.org.

Percentage of Patients Using Services

Alaska Health Centers provide comprehensive services to their patients including medical, dental and vision. For many services, patients are able to receive care through virtual visits. Nine percent of patient visits are provided virtually. Displayed here are the percentages of all patients who use each of the major types of services at their CHC.



Caring for Alaskans' Health

Alaskan patients visit their Health Center for a variety of reasons. Here are the top health concerns and most common dental services delivered in Alaska Health Centers by percentage of overall patients:



MEDICAL

- 8% Diabetes
- 9% Overweight or obesity
- 18% Hypertension



MENTAL HEALTH

- 9% Depression and other mood disorders
- 11% Anxiety (including post-traumatic stress)

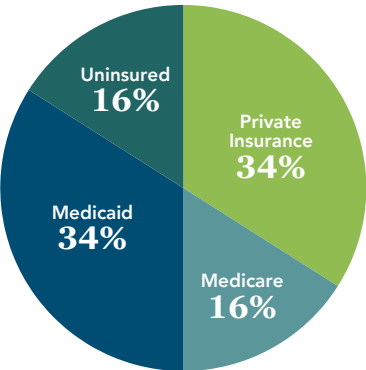


DENTAL

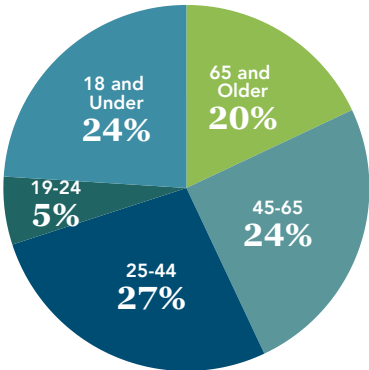
- 9% Restorative services
- 10% Oral Hygiene
- 15% Oral Exams

Photos Courtesy of Anchorage Neighborhood Health Center / DeReamers

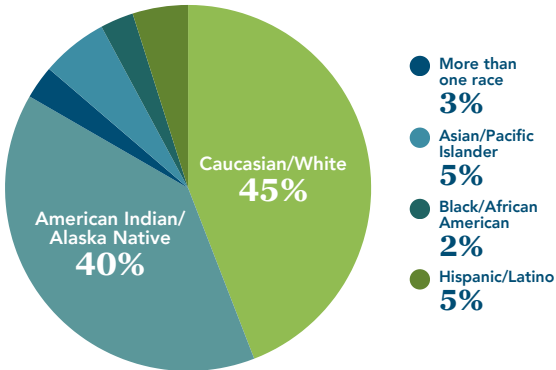
PATIENT INSURANCE
COVERAGE SOURCE:



PATIENTS
BY AGE:



PATIENTS BY
ETHNICITY/RACE:



The percentage of senior patients served in Alaska Health Centers has increased from 12% to 20% since 2018. Four percent of Health Center patients identify themselves as veterans. Learn about the care Alaska Health Centers provide for veterans, seniors, and other special population patients at alaskapca.org.

KEY HEALTH MEASURES

Alaska Health Centers are required to closely monitor and report on the quality of care they provide. In 2023, they tracked 15 key health measures. Health Centers focus on identifying and supporting at-risk patients to ensure they receive the screenings and early care that they need.

67%
of adult patients screened for **depression**

100%
of new **HIV infections** received initial treatment within 30 days

79%
of at-risk adult patients received screenings for **tobacco use**

71%
of high-risk cardiovascular patients take or have been prescribed **statin therapy**

69%
of adult mothers received **first trimester prenatal care**

48%
of adult patients received **cervical and breast cancer screenings**



Employment & Financial Impact of Health Centers and the Savings to Alaska’s Healthcare System

\$724 million | **ECONOMIC IMPACT**

Alaska Community Health Centers’ direct and indirect impact on the Alaska economy through economic output and labor income in 2021. *

4,254 | **SUPPORTING EMPLOYMENT IN
ALASKA COMMUNITIES**

CHCs are one of the largest employers in many rural communities providing direct healthcare jobs and supporting additional local employment. * **

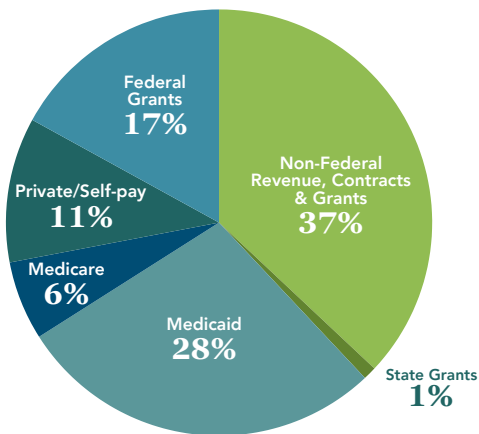
- 1,186 medical, dental, behavioral health, pharmacy, and vision providers and clinical staff
- 1,505 patient support, administrative, finance, and facility staff
- 1,497 supported jobs in local communities

24% | **LOWER COSTS FOR HEALTH CENTER
MEDICAID PATIENTS**

Alaska Health Centers save Medicaid 24% per person in total cost of care when compared with other providers*. Alaska CHCs provide care to 15% of all Alaska Medicaid beneficiaries while representing only 6% of total Medicaid expenditures. *

OPERATIONAL SUPPORT FOR ALASKA HEALTH CENTERS

Health Centers earn income from the care they provide and receive grant support from private and public sources. **



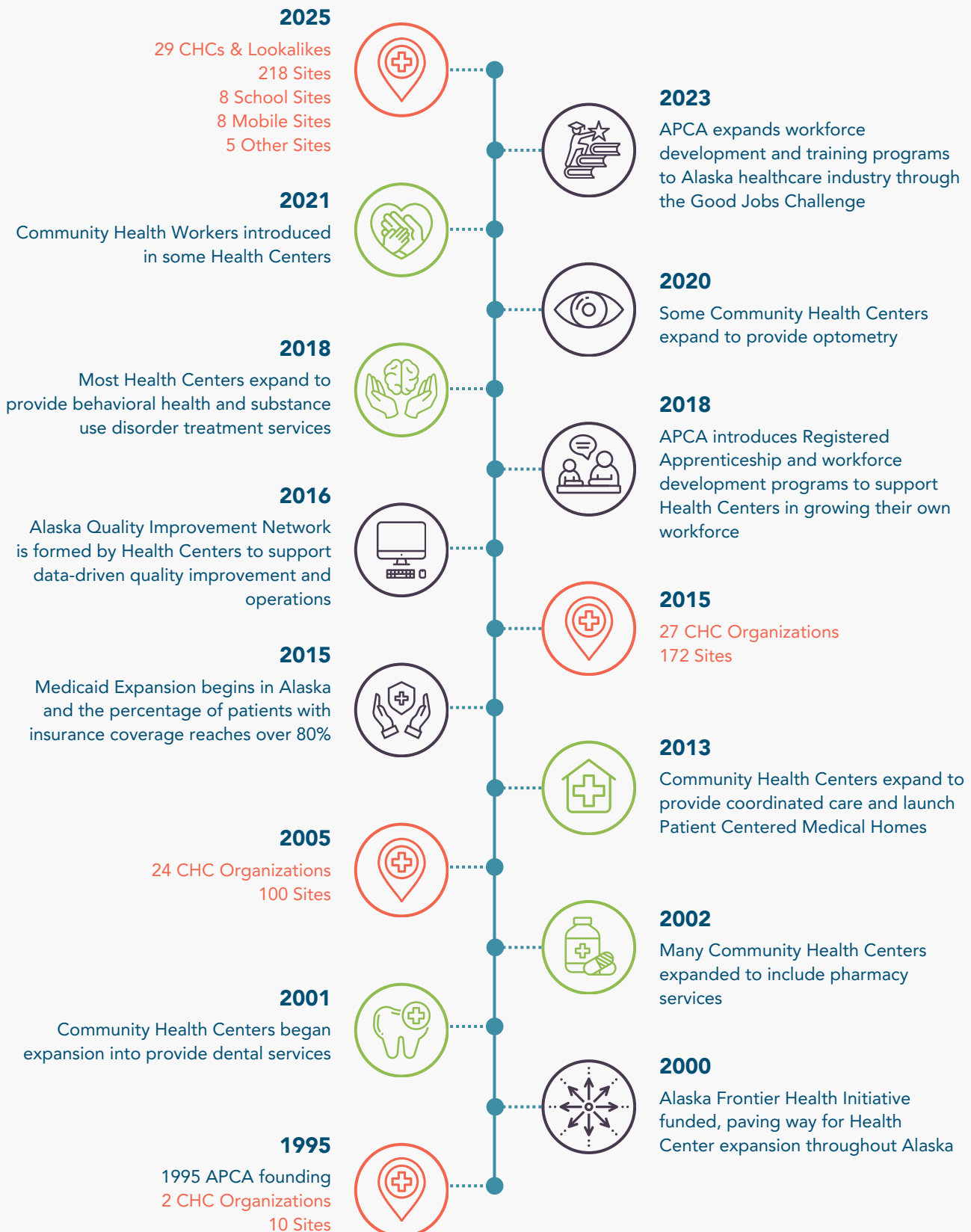
*National Association of Community Health Centers & Matrix Global Advisors, 2023 (based on 2021 UDS data from Alaska Health Centers).
** UDS Report, 2023



ALASKA PRIMARY CARE ASSOCIATION'S 30 YEAR ANNIVERSARY - 2025

Over 30 years, Alaska’s Community Health Centers have grown from two organizations and two sites to 29 organizations and 218 sites serving over 112,000 patients in clinics in most Alaska communities.

Along the way, Community Health Centers have greatly expanded the comprehensive care they provide, implemented new technology, embraced data-driven quality health, focused on health workforce development, and lowered the cost of care.





Alaska Community Health Centers

Aleutian Pribilof Islands Association
Anchorage Neighborhood Health Center
Bethel Family Clinic
Bristol Bay Area Health Corporation
Camai Community Health Center
Copper River Native Association
Council of Athabascan Tribal Governments
Cross Road Health Ministries, Inc.
Dahl Memorial Clinic
Eastern Aleutian Tribes, Inc.
Girdwood Health Clinic, Inc.
Ilanka Community Health Center
Iliuliuk Family and Health Services, Inc.
Interior Community Health Center
JAMHI Health and Wellness

Kodiak Area Native Association
Kodiak Community Health Center
Mat-Su Health Services, Inc.
Maniilaq Association
Norton Sound Health Corporation
Peninsula Community Health Services of Alaska, Inc.
SVT Health and Wellness
Seward Community Health Center
Southcentral Foundation
Southeast Alaska Regional Health Consortium
Sunshine Community Health Center
Tanana Chiefs Conference
Yakutat Community Health Center
Yukon Kuskokwim Health Corporation

The Alaska Primary Care Association (APCA) supports the development and operations of Alaska's Community Health Centers and the workforces on which they depend. Its mission is Advancing Alaska's Wellness, and it partners with Health Centers to promote, expand, and optimize access to primary care for Alaskans.

3111 C Street, Suite 500
Anchorage, AK 99503
907-929-2722
alaskapca.org